

STPCon 2016 - San Francisco -- Practical Implementation of Automation Workshop

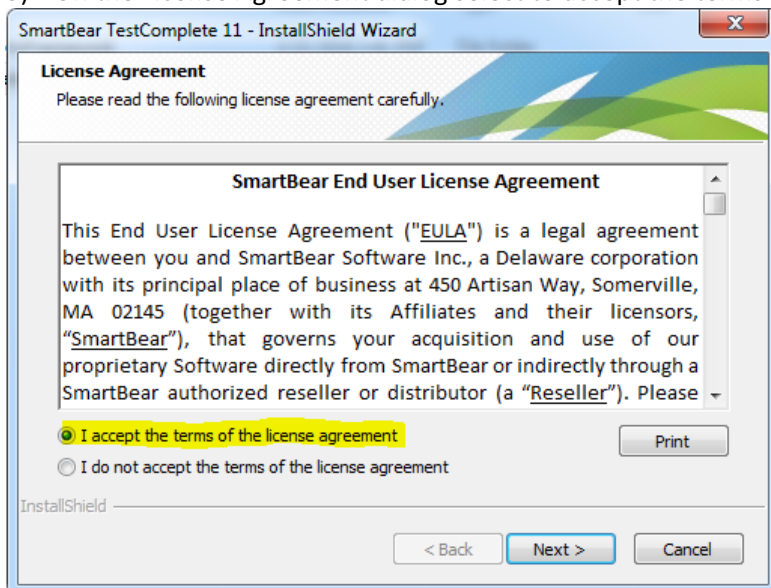
Install/Setup of TestComplete

Prerequisites:

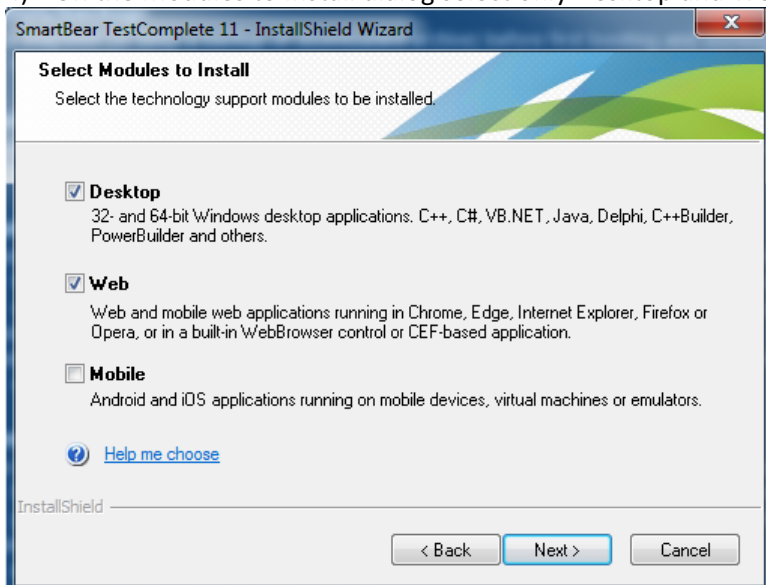
- 1) Personal laptop computer with Windows 7-IE 11 Virtual Machine installed and configured.
- 2) Student will need to prepare their machine for the hands-on lab portion of the workshop before the day of the class. This will include installing and configuring the Test tool software to be used during the lab. It is advised to start this about 1 week before the actual workshop.

The following is the install/setup process for TestComplete for the Workshop:

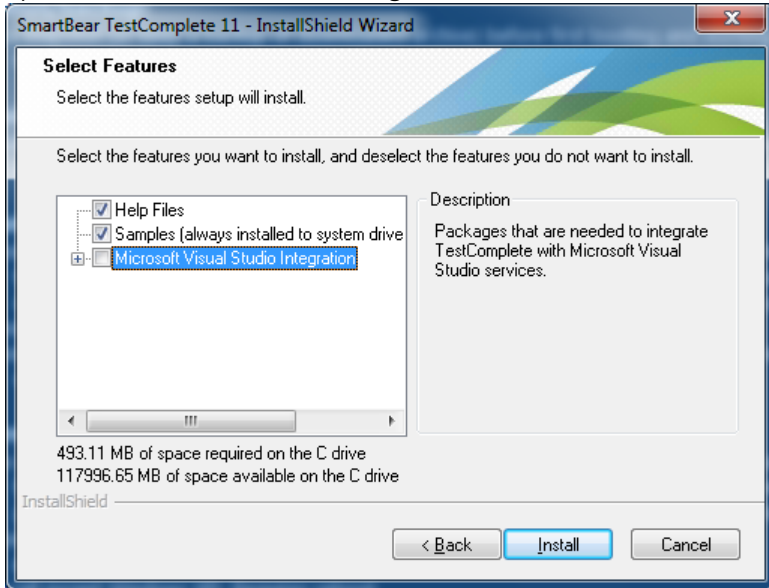
- 1) From inside of the VM open/run the Install program for TestComplete with Administrator rights. Right click on the setup program and select "Run as Administrator".
- 2) Let the installer extract the needed files.
- 3) On the License Agreement dialog select to accept the terms of the license, and click Next to continue.



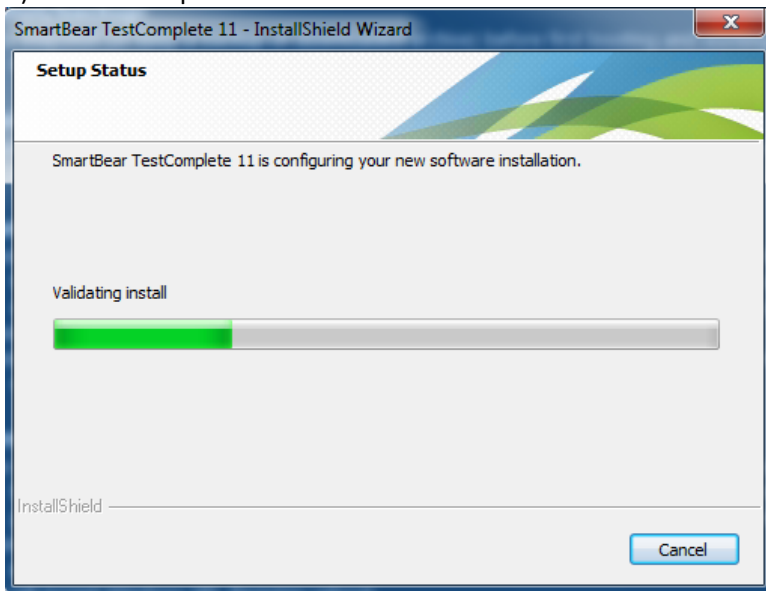
- 4) On the Modules to Install dialog select only Desktop and Web, do not select Mobile. Click Next to continue.



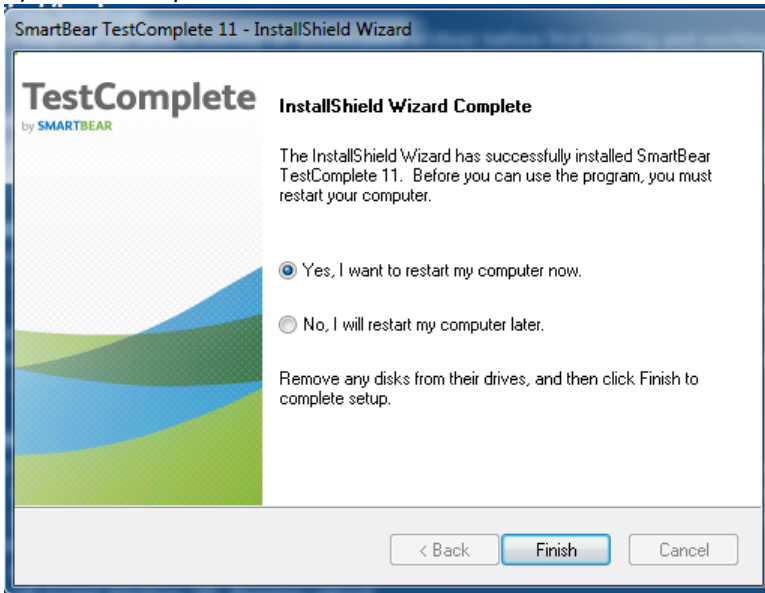
- 5) On the Choose Destination Location use the default value and click Next to continue.
- 6) On the Select Features dialog deselect the Microsoft Visual Studio Integration item. Click Install to continue.



- 7) Install will proceed.

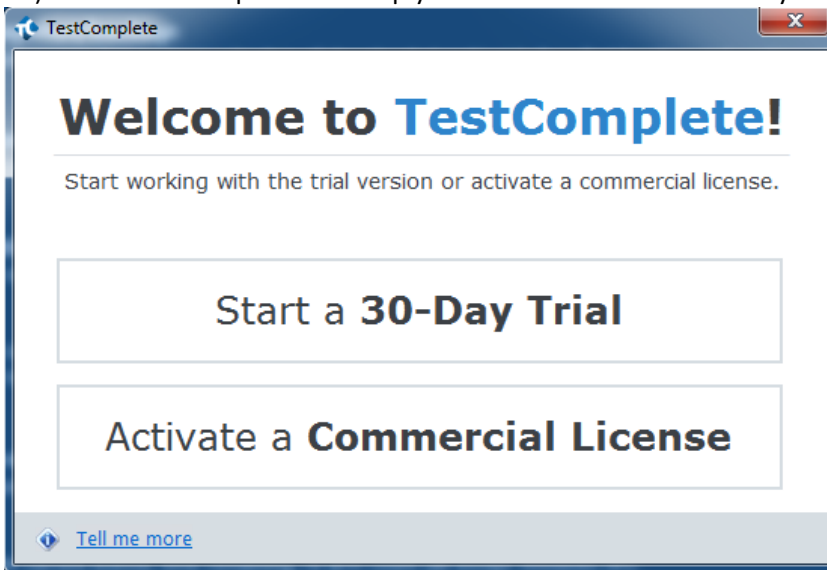


8) Once completed click Fish to restart the machine.



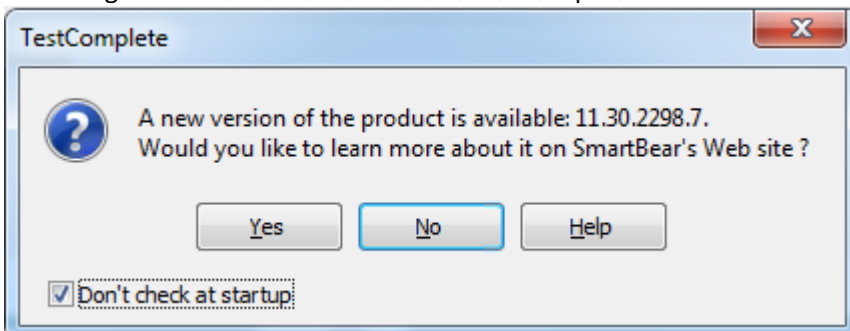
9) After the machine restarts open TestComplete to check it was installed correctly.

10) When TestComplete starts up you can click on "Start a 30-Day Trial" to continue.



11) If you get the License Activation warning about using a VM click Activate to continue.

12) Once the temporary key is active TestComplete IDE will open. If you get a dialog asking about a new version being available select "Don't check at startup" and click No to continue.



13) Any other dialogs appear about updates just select to be notified at a later time. TestComplete is now installed.

