

STPCon 2016 - San Francisco -- Practical Implementation of Automation Workshop Lab Setup

Workshop Class Prerequisites:

- 1) Personal laptop computer with either Windows 7 or later. Laptop will need to have at least 4 Gigabytes of RAM and about 40 Gigabytes of disk space available.
- 2) If the student is using a Linux or Apple based laptop then they will need to have the capacity to run a Windows 7 Virtual Machine. Can also use a Windows based machine with or without a VM. A VM is recommended.
- 3) Student will need to have a basic understanding of programming in relation to test automation. The lab will use VBScript, so some familiarity with it is needed.
- 4) Student will need to prepare their machine for the hands-on lab portion of the workshop before the day of the class. This will include installing and configuring the Virtual Machine and Test tool software to be used during the lab. It is advised to start this about 1 week before the actual workshop.

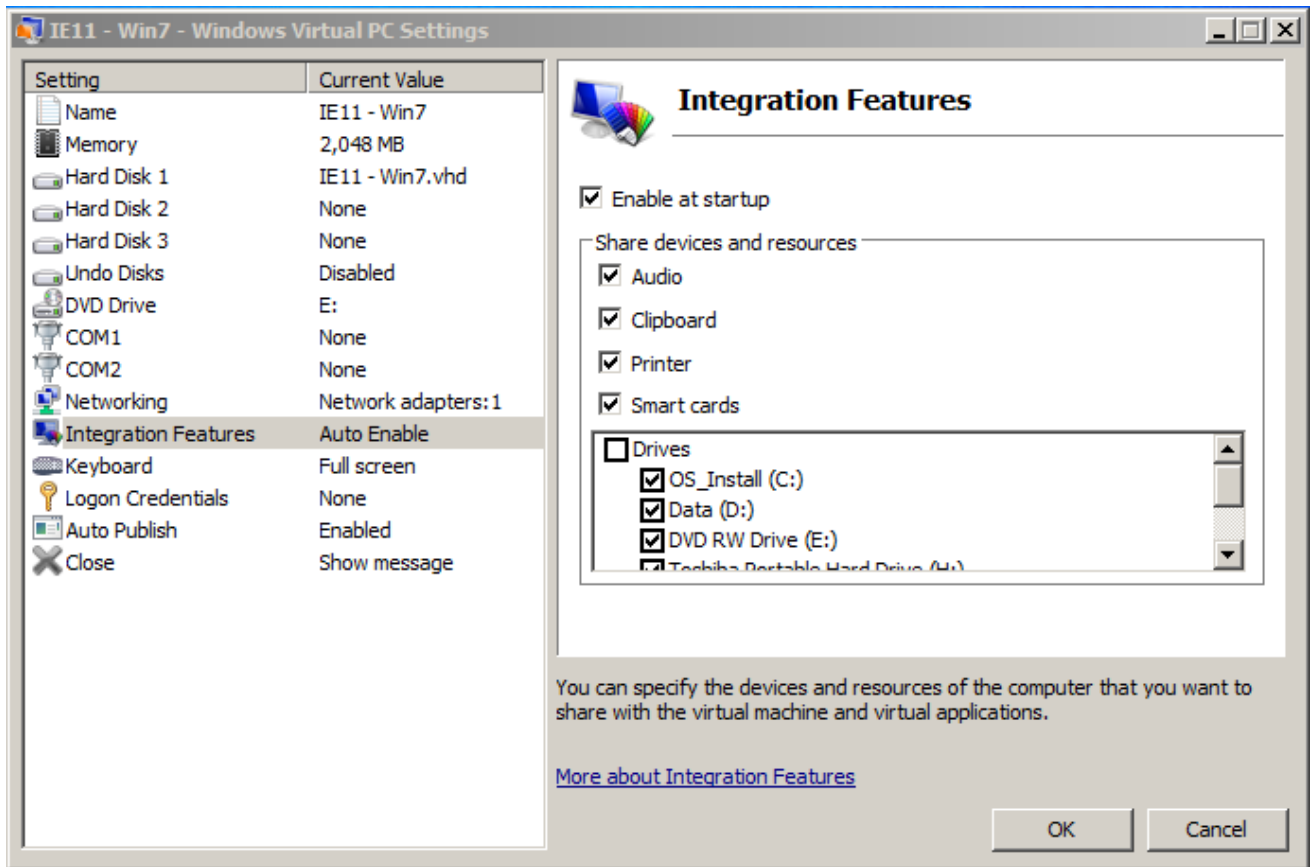
As part of preparation for the Lab work portion of the workshop the student needs to do the following before the day of the class itself. Download and install & configure the following items on their laptops:

- 1) Download and install either Virtual PC or VMWare player on their laptop for their operating system. Microsoft Virtual PC for Windows 7 is located here: <https://www.microsoft.com/en-us/download/details.aspx?id=3702>. VMWare Player for either Windows or Linux is located here: https://my.vmware.com/en/web/vmware/free#desktop_end_user_computing/vmware_workstation_player/12_0.
- 2) Download and install the Windows 7-IE 11 Virtual Machine for the chosen operating system and VM player from the site: <https://dev.windows.com/en-us/microsoft-edge/tools/vms/windows/>. Be sure to also download the ReadMe file (a PDF) for additional information including login User ID & Password.
- 3) Open and activate the Windows 7 VM:

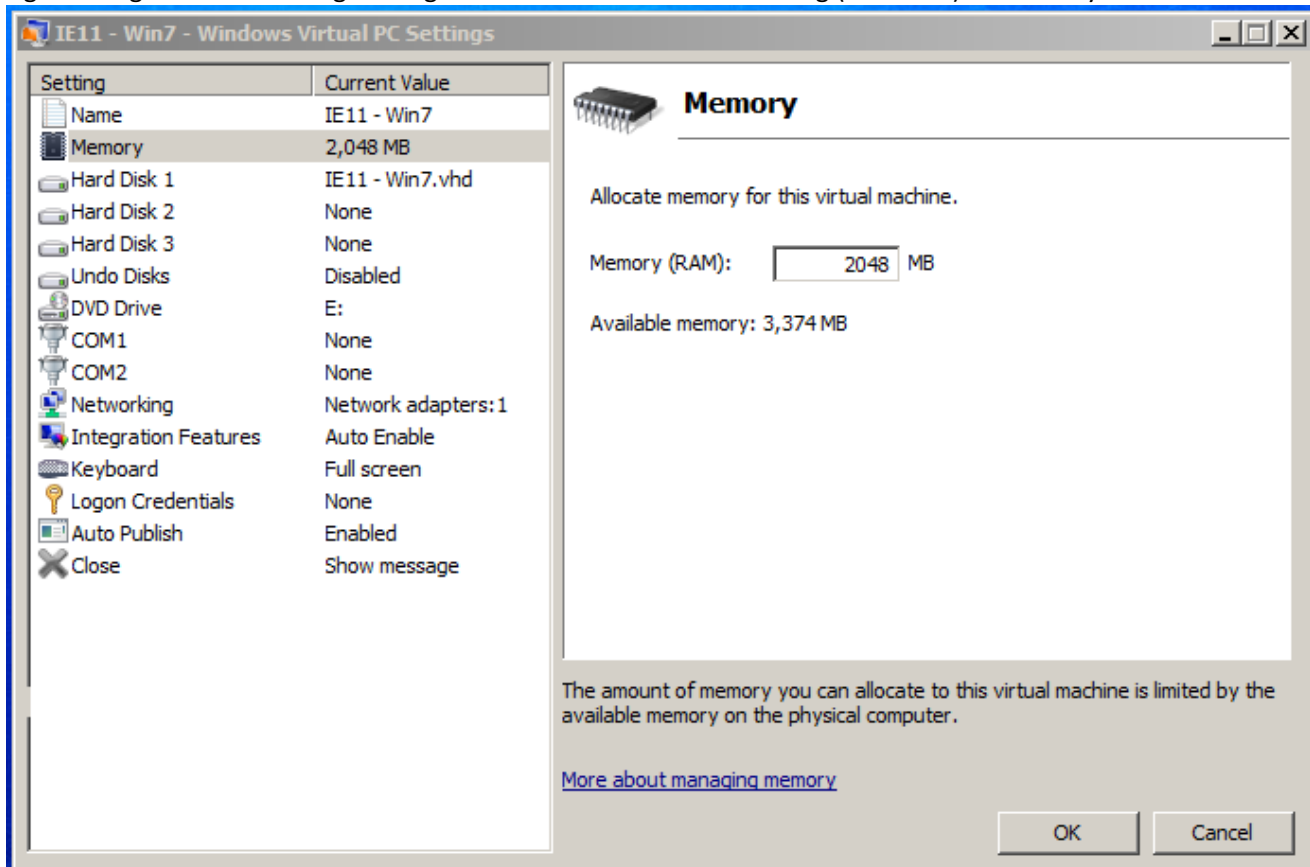
Activation:

For Windows 7, 8, and 8.1 virtual machines, you need to connect to the Internet in order to activate the trial. In most cases, activation will be done automatically after a few minutes, but you can also enter "*slmgr /ato*" from an administrative command prompt. This will give you 90 days.

- 4) Configure the Windows 7 VM to use Network access for the local version of IE 11 to have access to the Internet. For a Virtual PC VM go to <https://technet.microsoft.com/en-us/library/bb740792.aspx> for the information. Use the External network adapter information. For a VMWare Player machine go to the online documentation at <http://pubs.vmware.com/player-12-windows/index.jsp#com.vmware.ICbase/Welcome/welcome.html> and look at "Configuring Network Connections". Specifically look at "Configuring Bridged Networking". In either situation you will need to connect to the Network Adapter on your laptop, do not use NAT.
- 5) Configure the Windows 7 VM to access the local hard drives of your laptop. For Virtual PC this is part of the Integration Features item in the Settings dialog:

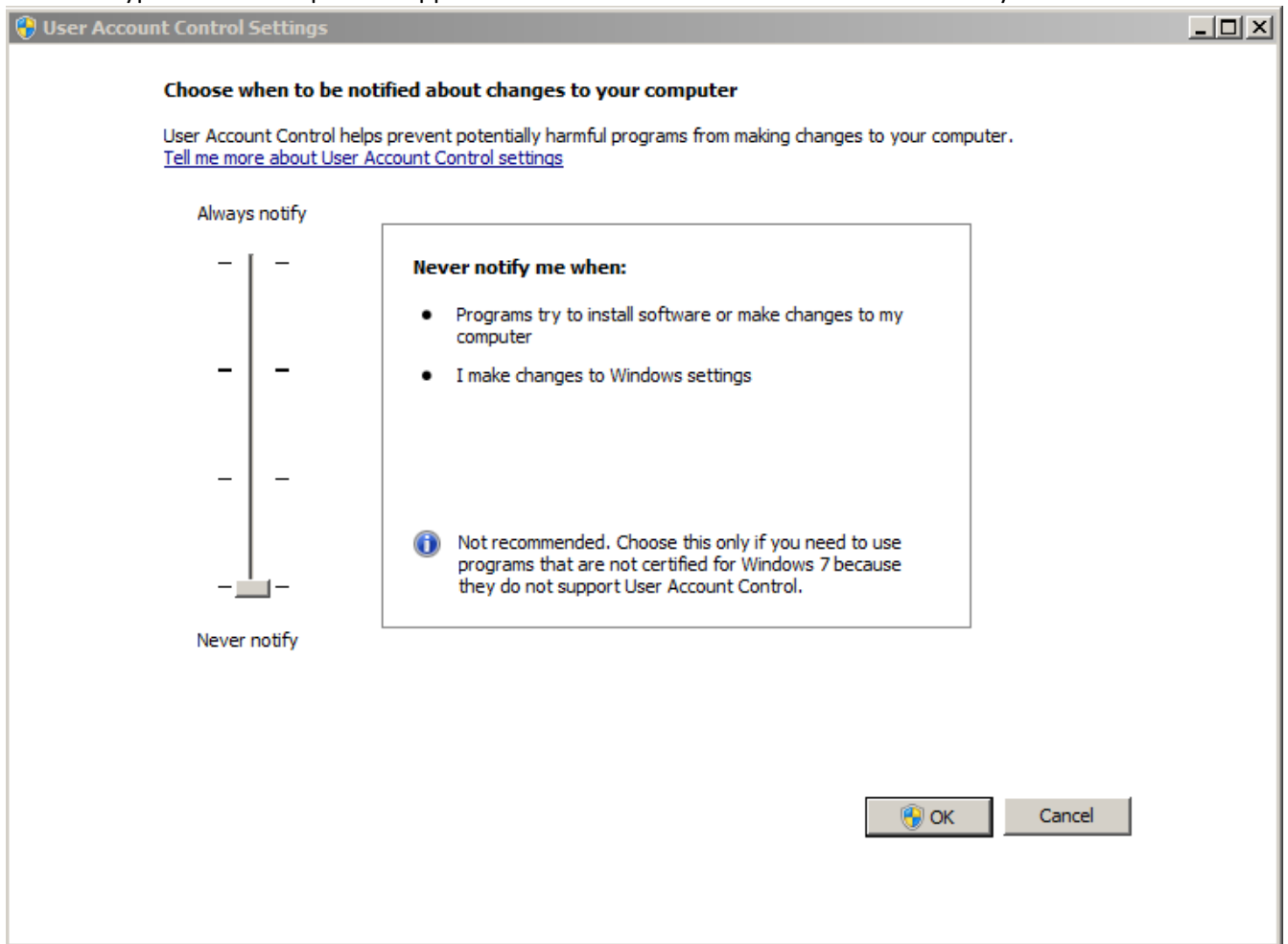


6) Again using Virtual PC Settings configure the VM to have at least 2 Gig (2048 MB) of memory allocated to it:



* This will require shutting down the VM and only opening Virtual PC itself and configuring a dormant VM. For VMWare Player you will need to do the following:

- 7) Setup a Share on your laptop's local hard drive and give full permissions to it to all users.
- 8) Inside of the VM open the Windows Explorer and map a new network drive to the share drive that was just setup.
- 9) Next open the User Account Control Settings applet. From the Start button in the "Search Programs & Files" text field type in "UAC". Open the applet and set the Notification level to "Never notify".



- 10) Go to Microsoft and get the Microsoft Access Database Engine 2010 Redistributable at: <https://www.microsoft.com/en-us/download/details.aspx?id=13255>. From there select the English version and click the Download button. Select the AccessDatabaseEngine.exe file (not the x64 version) and click Next button. Download and save the file to your machine. Inside of the VM install the files to the system, follow the instructions from the Microsoft download site.
- 11) Download and install the trial version of SmartBear TestComplete on the Windows 7 VM. It is located at: <https://smartbear.com/product/testcomplete/free-trial/>. This is a 30 day free trail of TestComplete. If you want you can download the installer onto your local drive and then create a network share drive that the VM can access to run the install from.
- 12) Make sure they have access to a spreadsheet editor program (Excel) on their local machine (not the VM), and/or have access to the online Excel file editor Zoho Sheet at: <https://sheet.zoho.com/sheet/excelviewer> (make sure it can be opened on the VM).
- 13) Download and install onto the VM the Microsoft Excel Viewer program located at: <https://support.office.com/en-US/article/View-workbooks-by-using-Excel-Viewer-649A52EE-FDC7-481A-8A34-CF9DF52D8FE2>. This is so they can view Excel test case files inside of the VM when needed.
- 14) Unzip the TestComplete project code (WorkshopAutomationFramework.zip) to the C: drive of the VM. Extract it to the root and have the folder name be "AutomationFramework".

